

Orifice Tip Replacement Procedure

Series 600 Quick Reference Card



The following procedure describes the steps to change or replace the main burner gas orifice(s) on Series 600 appliances, All Options.

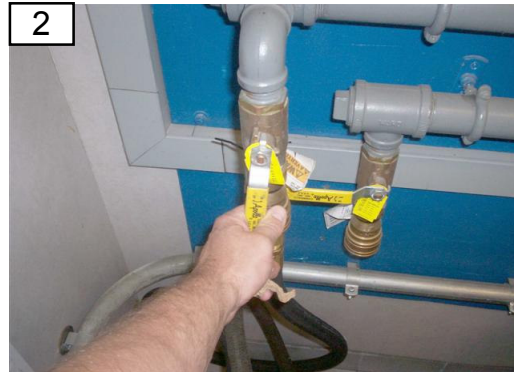
Note: This procedure should be performed with the main gas supply shut off and disconnected.

1

Standard Input Models
1/2" Deep Socket
w/ Extension

Hi Input Models
1/2" & 7/16" Deep Socket
w/ Extension
7/16" Open End Wrench

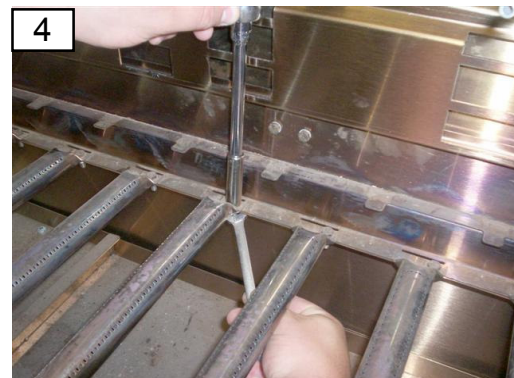
Recommended Tools



Turn off the main gas supply.



Remove Top Grids, Radiants or Coal Screens.



For Hi Input Models, use the 7/16" deep socket, and 7/16" wrench to remove mounting bolt and nut from the burner.



For Standard Input Models, pull the hitchpin from the burner mounting flange.



Lift the burner up, and pull it out from the burner orifice. It is the same motion for all Models.

Orifice Tip Replacement Procedure

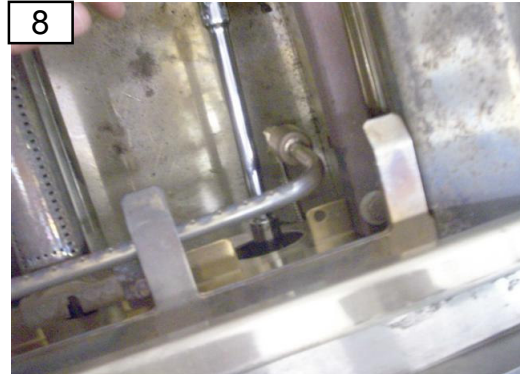
Series 600 Quick Reference Card



Note: Brass to brass piping connections should not require any thread tape or sealer compounds. If gas leaks are detected and thread sealants are used, the sealant should be suitable for gas connections, and rated for use in elevated temperature zones.



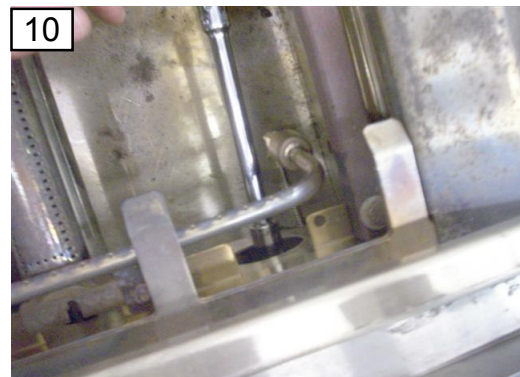
7
Locate exposed main burner orifice, check thread depth.



8
Remove the existing burner orifice with the 1/2" deep socket.



9
Thread new orifice onto the burner valve finger tight.



10
Tighten orifice onto the valve until the thread depth from the previous orifice is matched.



11
Replace burner, securing burner in place with nut and bolt, or the hitchpin, depending on Model.



12
Repeat procedure for all burner orifices to be replaced.

Orifice Tip Replacement Procedure

Series 600 Quick Reference Card



Note: The manifold gas pressures may change due to an orifice replacement, make sure the appliance is operating in accordance with the manufacturers operators manual.



Replace Radiants or Coal Screens, and Top Grids to their original positions.

14

Check for gas leaks, and set gas pressures in accordance with the Pitco P&I checklist, Part No. L14018, at the conclusion of this procedure. The use of Personal Protective Equipment is recommended.

In the event of problems with or questions about your equipment, please contact the MagiKitch'n Authorized Service and Parts representative (ASAP) covering your area, or contact MagiKitch'n at the numbers listed below.

(800) 258-3708 US and Canada only
or (603) 225-6684 World Wide

Website Address: www.magikitchn.com